



# Helping a generation of **young people** to give **their time** and **talent** to improve **their community**

---

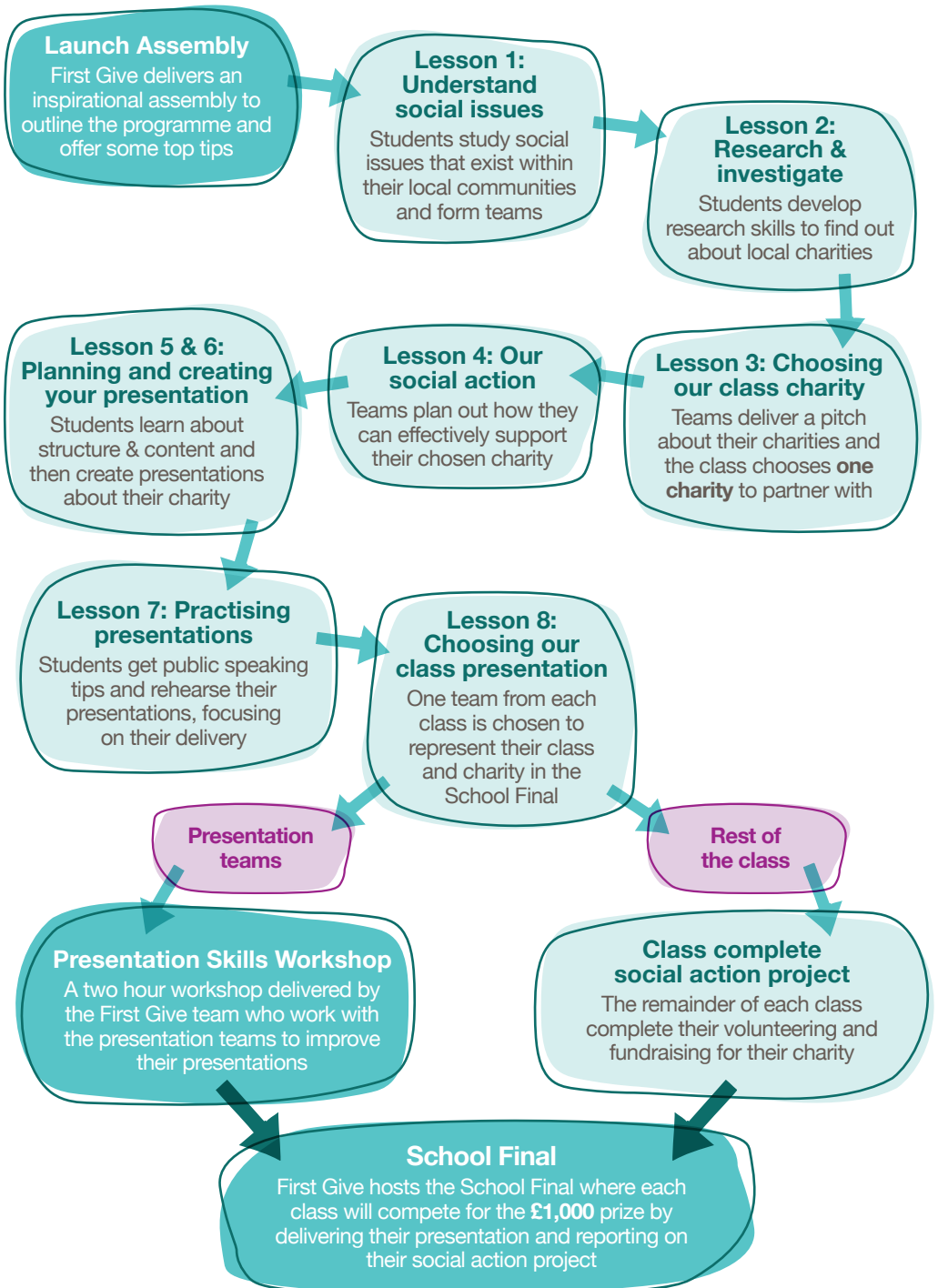
A **fully-resourced programme** that's flexible to the needs of your school. Students develop their **social conscience** and **key professional skills** whilst supporting local causes they care about.

**G** **First  
Give**

*BUILDING A CULTURE OF GIVING*

Registered charity number: 1156416

# How it works



## First Give will:

- 1 Give **£1,000** prize money to every school
- 2 Provide an additional **£1,500** worth of resources and support
- 3 Facilitate three sessions at key points in the programme
- 4 Provide a scheme of work ready for OFSTED or ESTYN inspections

## Schools will:

- 1 Contribute **£500** towards the programme
- 2 Teach the programme in curriculum time, to an entire year group
- 3 Support students to plan and deliver their presentations and social action

## Further Benefits:

- 1 Raises the school's profile and strengthens community relationships
- 2 Delivers key components of SMSC in England and the Welsh Bacallaureate in Wales

## Impact 2016/17

**87%** of students are more aware of charities and social issues in their communities

**69%** of students feel that they have improved their leadership skills

**90%** of students are more open to the ideas, cultures, values and beliefs of others

**68%** of students feel First Give has made them more confident in other areas of life such as interviews

## Key outcomes

### Money

**88%**

of students say they are more likely to give their money to charity having done the programme

### Time

**66%**

of students say they are more likely to volunteer for a charity in the future having done the programme

### Presentation confidence

**69%**

of students feel more confident about delivering a presentation to a large group of people having done the programme



“The best thing about the First Give programme was witnessing our students take responsibility for their own learning and becoming confident, resilient and independent learners. The level of progress made by all individuals in this short space of time has been outstanding. The project is for a great cause and really helps to develop young people into active members of their community. Highly recommended!”

**Thoraya Al-Hafidh,**  
Citizenship Leader, Alexandra Park School



“The First Give programme is outstanding. The resources and lesson plans are easy to implement and have good potential for outstanding learning and progress from all students. It is original and exciting and makes students take a genuine interest in their local community.”

**Ben Chappell,** Head of PSHE, Wilson's School



“Working with First Give was a delight. Our students were able to develop their gifts and talents for the benefit of others; visiting charities, investigating their needs, writing songs, applying their financial skills and developing their persuasive writing and marketing skills! It was a wonderful experience for both students and staff.”

**Julia Waters,** Headteacher, Ursuline High School

**How to get involved...**

To sign up or find out more:

Call us on **020 7443 5169**

Email the team at **[info@firstgive.co.uk](mailto:info@firstgive.co.uk)**

Visit the website at **[www.firstgive.co.uk](http://www.firstgive.co.uk)**



@FirstGiveUK



First Give



@first\_give



FirstGiveUK

**Pears**  
Foundation

 **four acre trust**

**Lower Green**  
FOUNDATION

**JackPetchey**  
Foundation  
Inspire • Motivate • Achieve